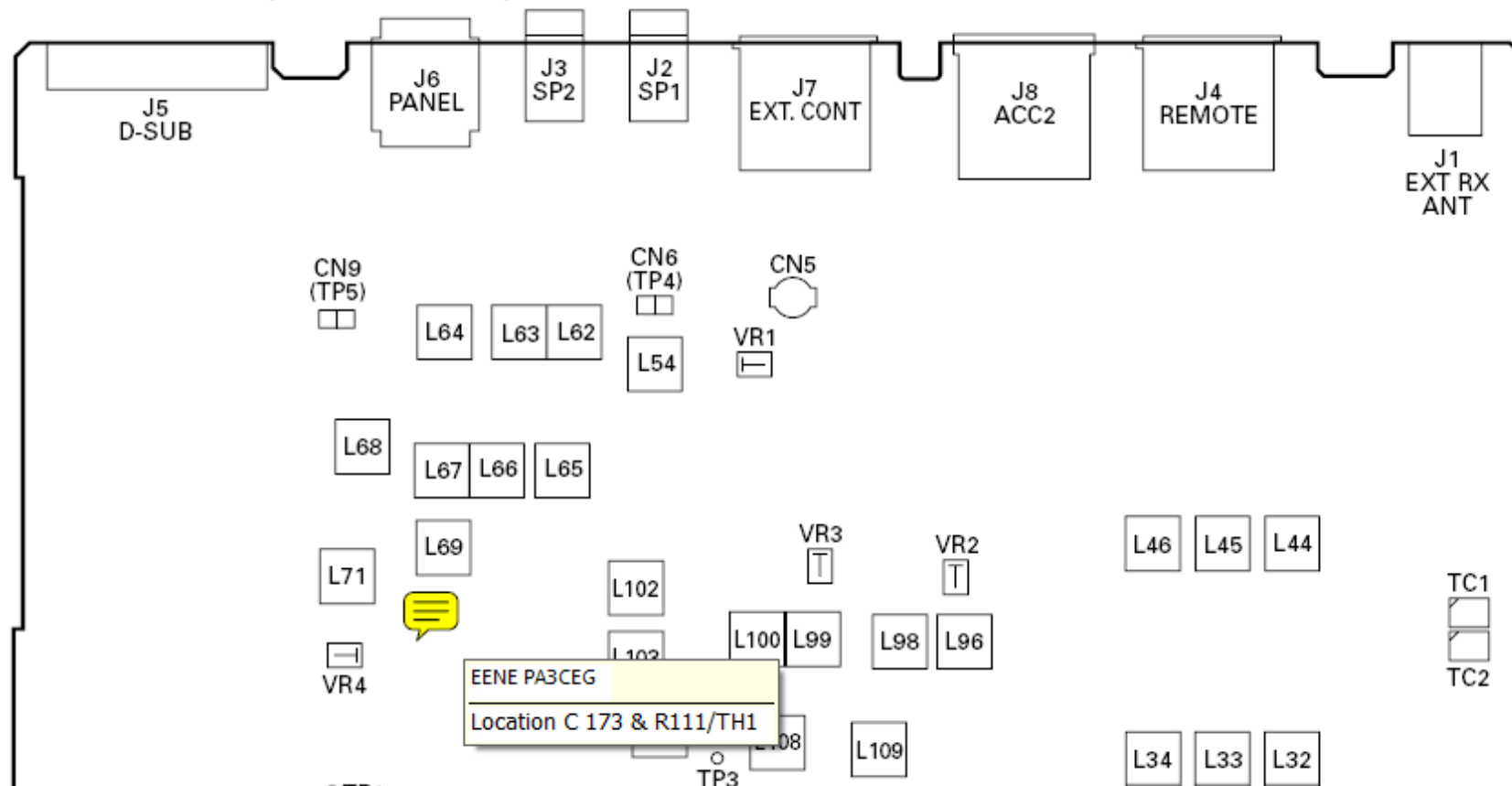
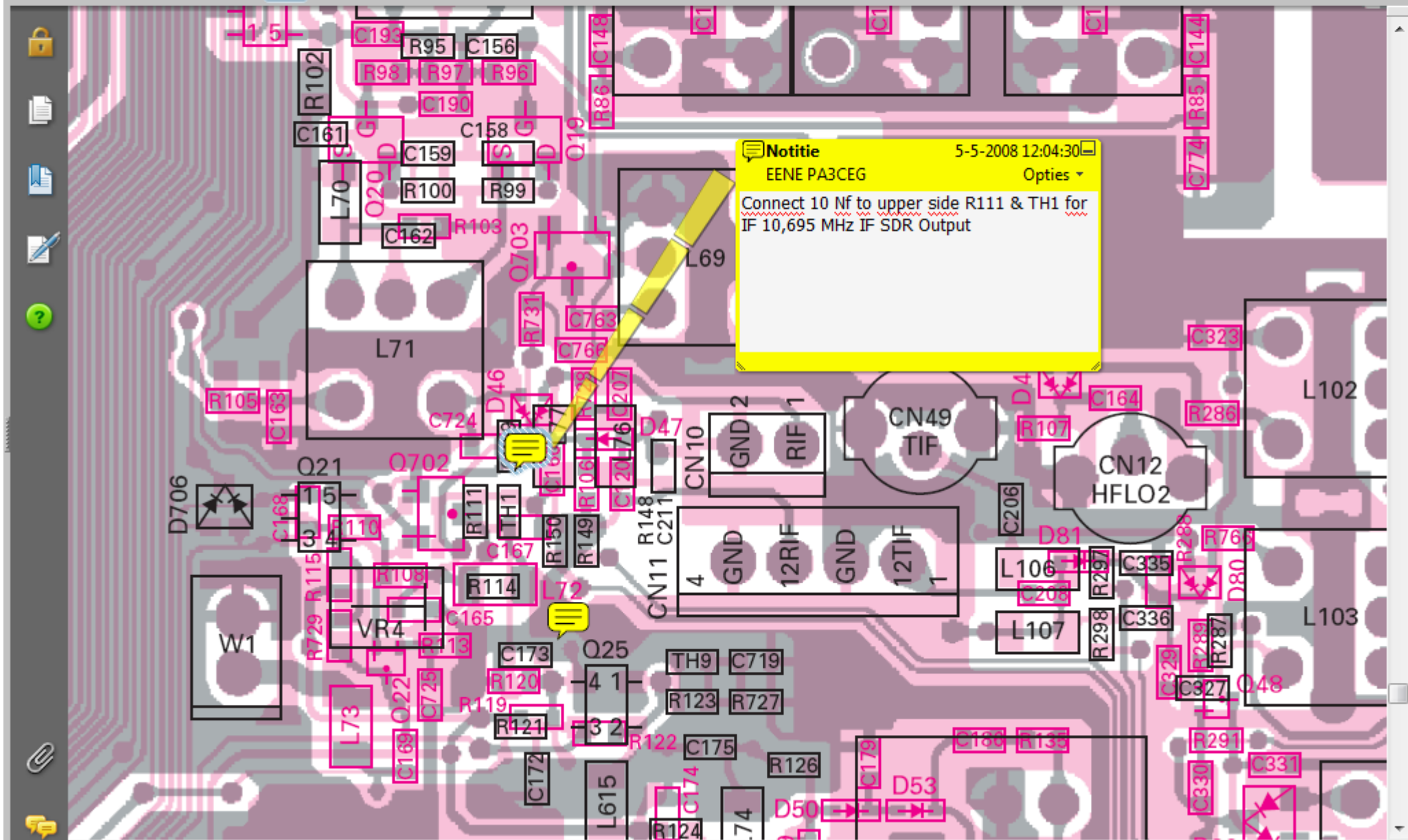


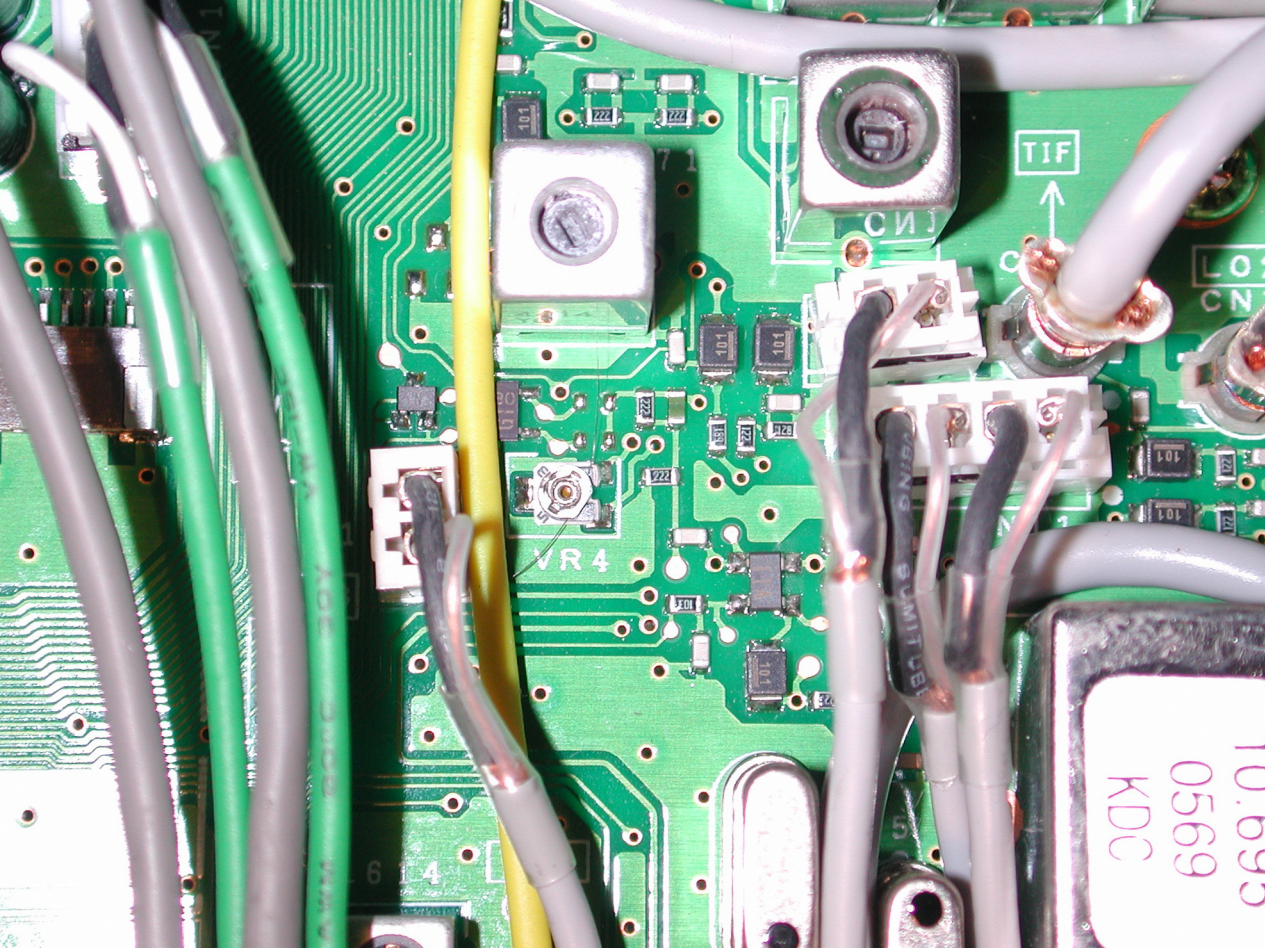
TS-2000/X

ADJUSTMENT

Adjustment Points (Lower Side)







TIF

VR5

VR4

BALANCE SNIP

10.699
0569
KDC

6 4

101

222

101

101

101

101

222

222

222

101

101

101

101

101

LO

CN

10.695 MHz

IF Tap

Grnd

PA3CEG

+ 7 V

TIF

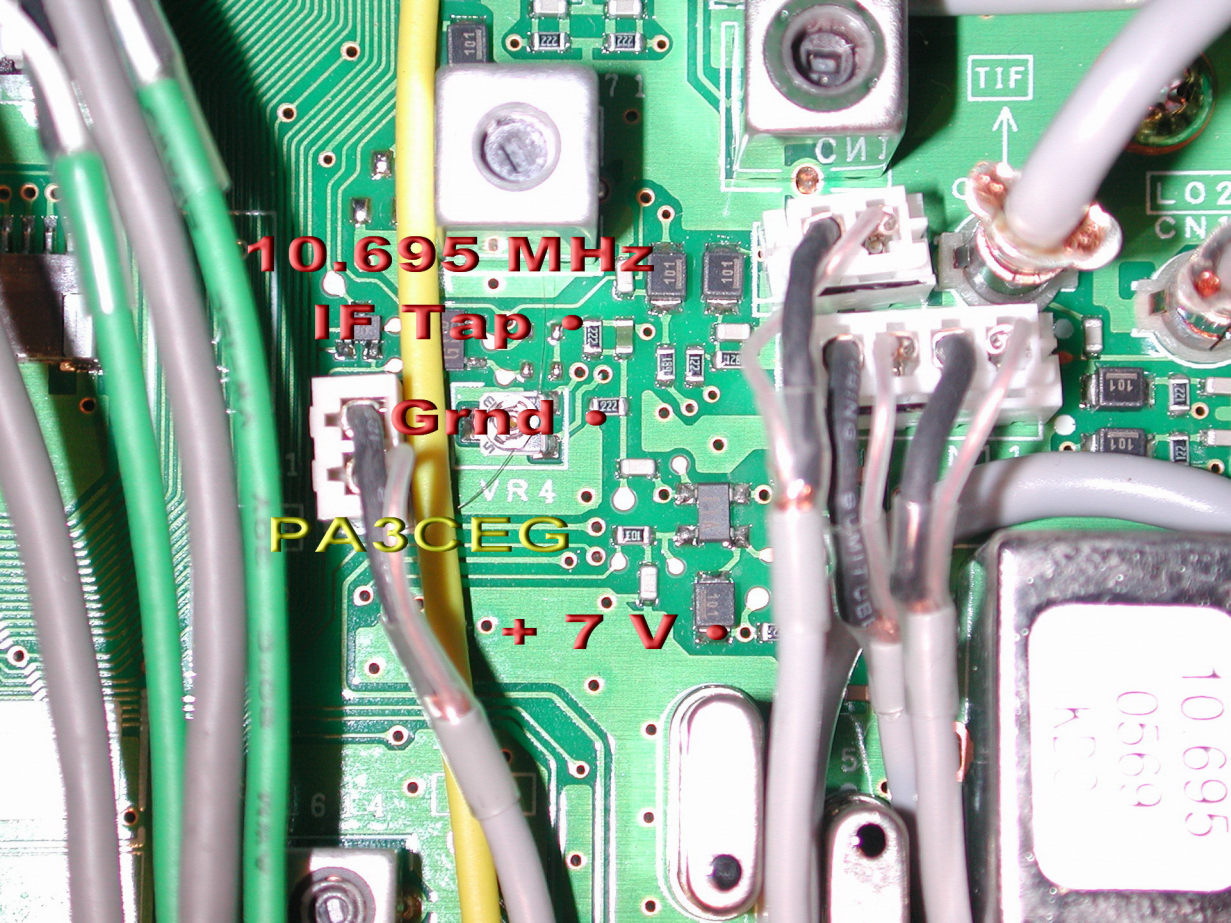
CN1

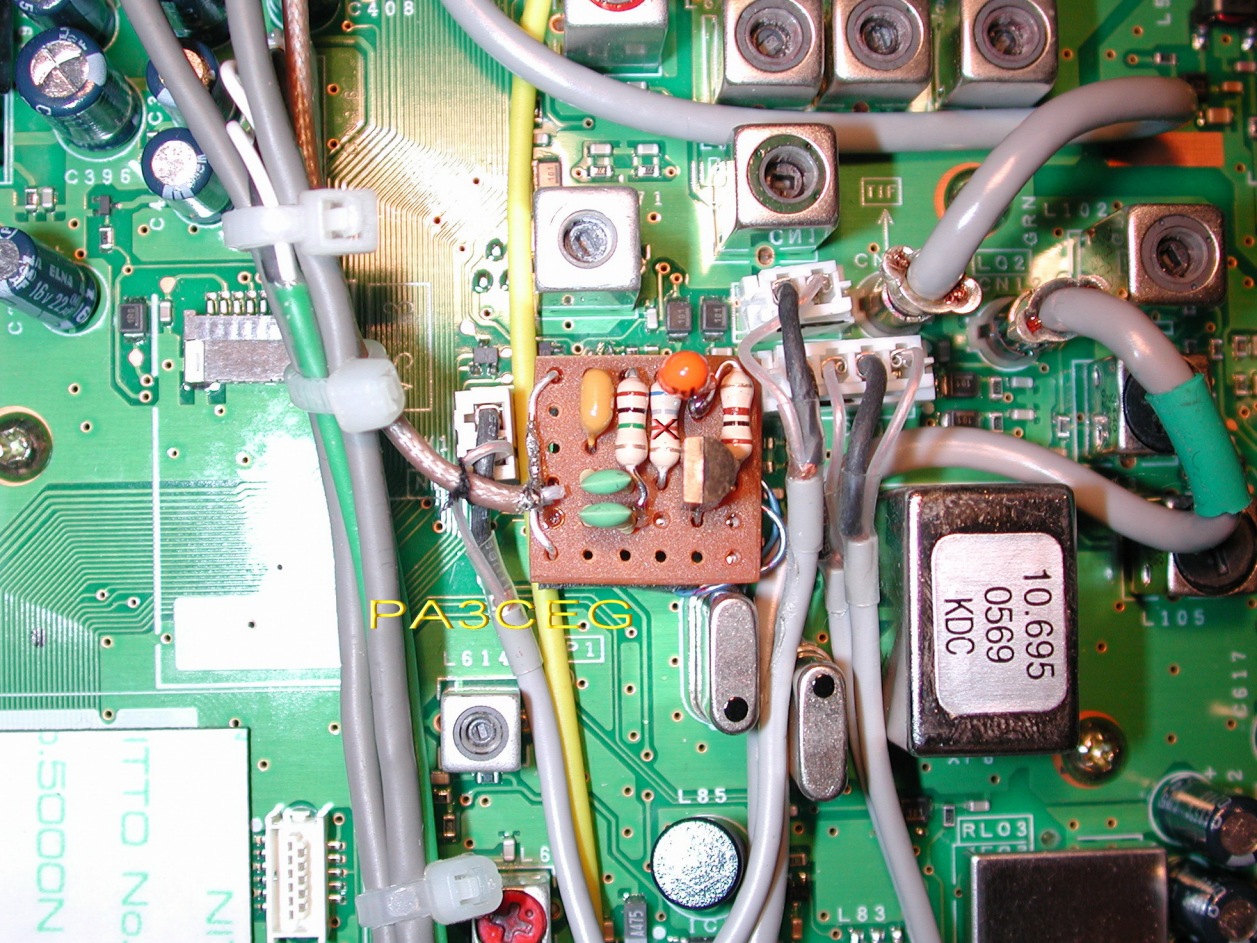
LO2

CN2

VR4

10.695
05699
K202





PA3CEG

10.695
0569
KDC

5000N
ITTO NO
N

C396
C408
18V 2200µF

L614

L85

L83

RL03

L105

L02

TIP

CH1

CH2

L05

IC

L02

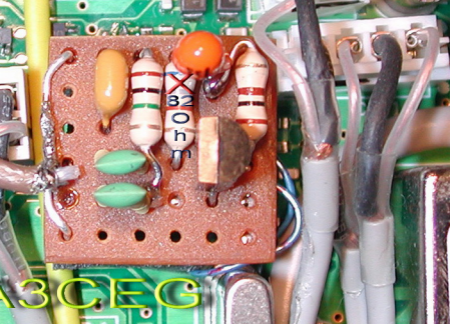
GRN

GRN

GRN

GRN

GRN



3CEG

IF Buffer

7V

TS2000X

310

100nF

1uF

PA3CEG07.

100

10 nF

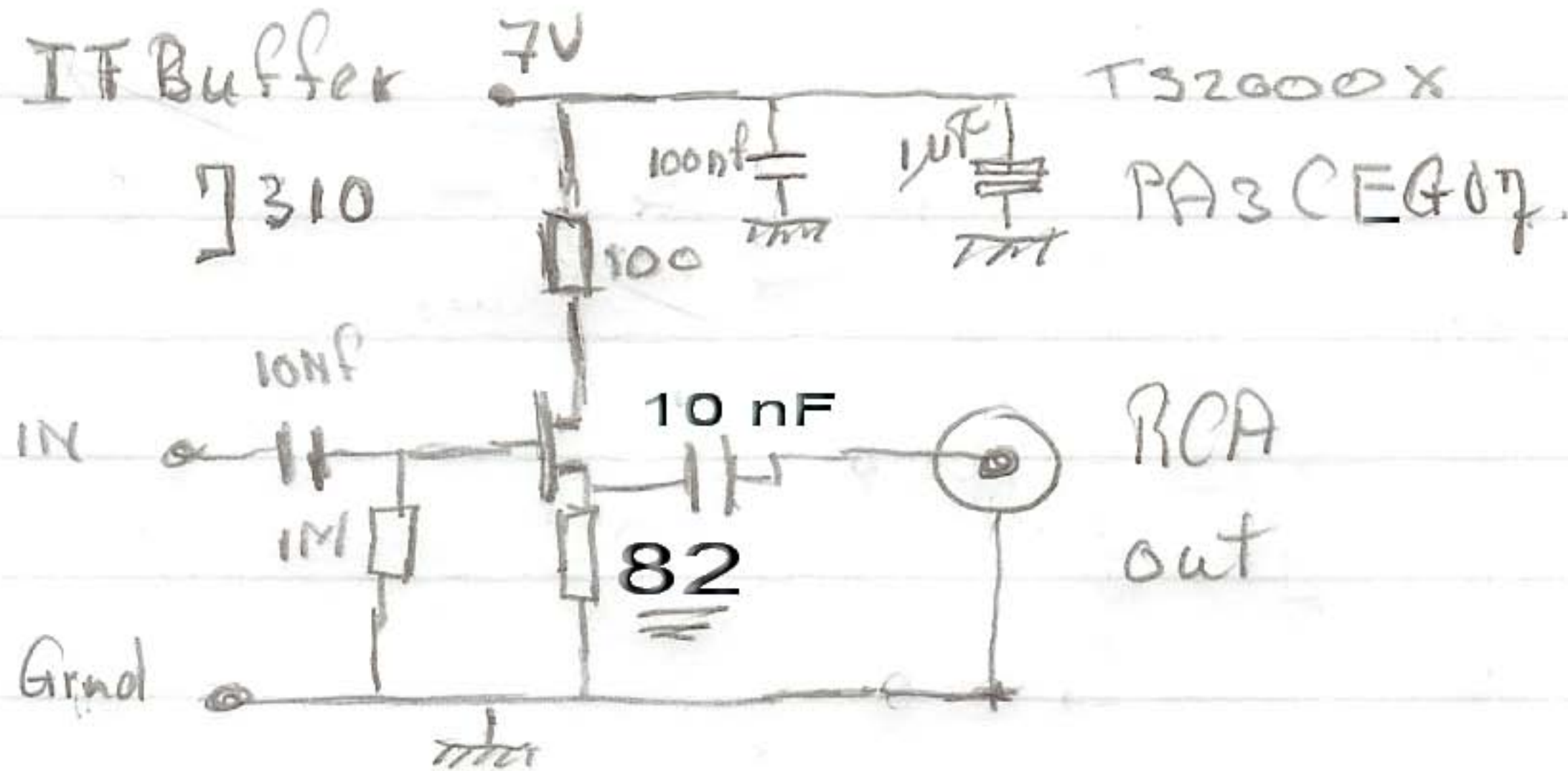
RCA

82

out

Ground

~~600~~ in 82



KEY PADDLE

ANT
430



SP1

EXT. CONT

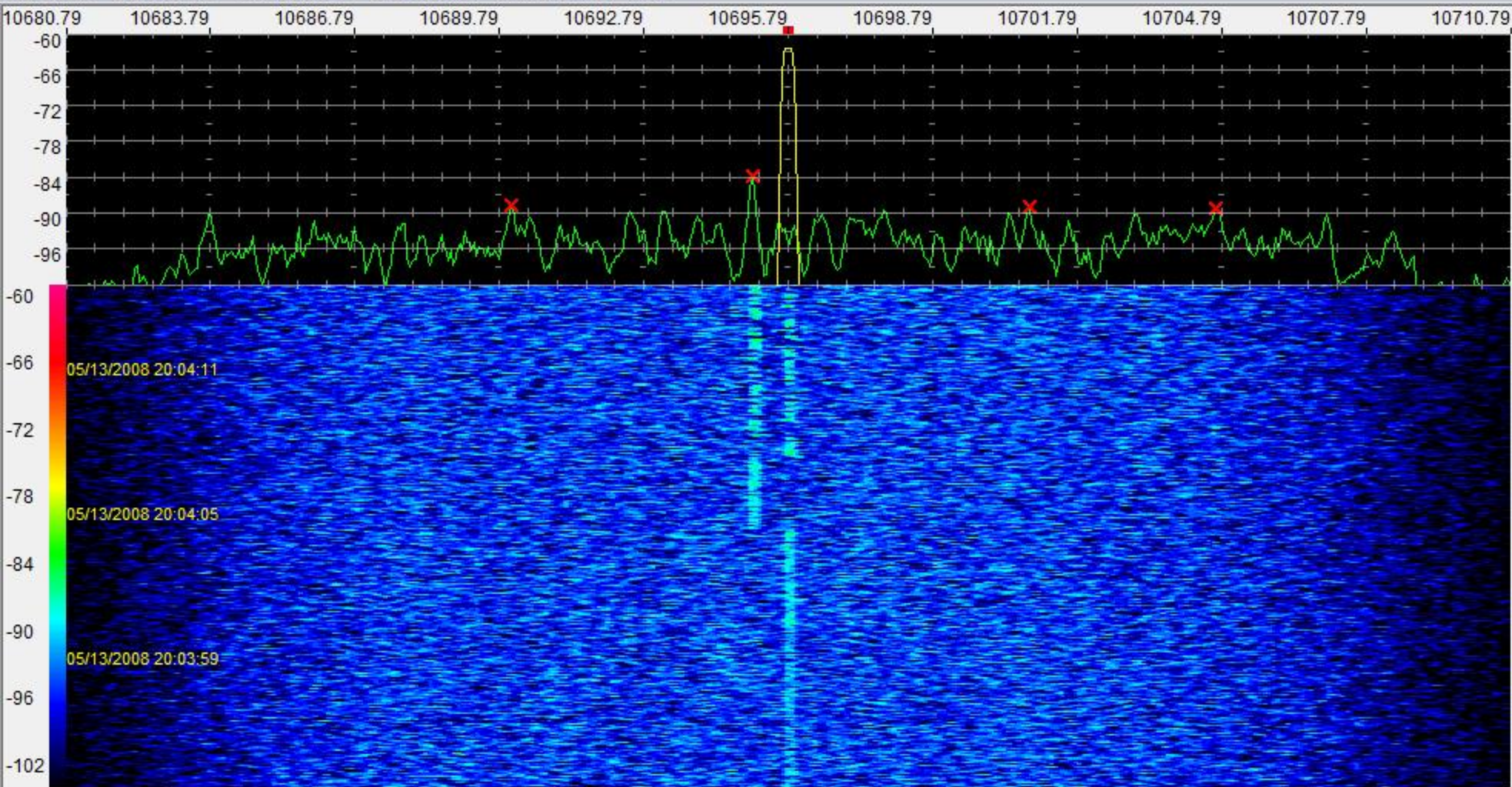
IF

ACC 2

REMOTE

OUT





Raw Data 2D Plot 3D Plot V Waterfall H Waterfall Combo Continuum Phase

Offset Shift

sw NCO = 800 Demod Frequency

10707.915 KHz

1 FFT Ave
 2 Smoothing
 4096 FFT/BLK Size
 3 dB/Div V Scale
 NCO Null

10,695.790 KHz
 Save Span Restore
30.000 KHz

Stop(F10) Pause(F11) Start(F12)

Filter Lo= -125Hz Hi= 125Hz Width= 250Hz

-84.4dB



Demod On
 AM WFM
 FM NFM
 LSB USB
 CW CWr
 DSB

Setup...

Peak NB MUTE

SDR-IQ->Sound 1 \
 Fs=196078 Hz
 BW Res = 48 Hz
 10695.151 KHz -81.39 dB
 10695.008 KHz -86.54 dB
 10702.475 KHz -87.57 dB
 10690.699 KHz -88.34 dB